

Marblehead

Lightweight swing rig rigging plan – booklet version

Description

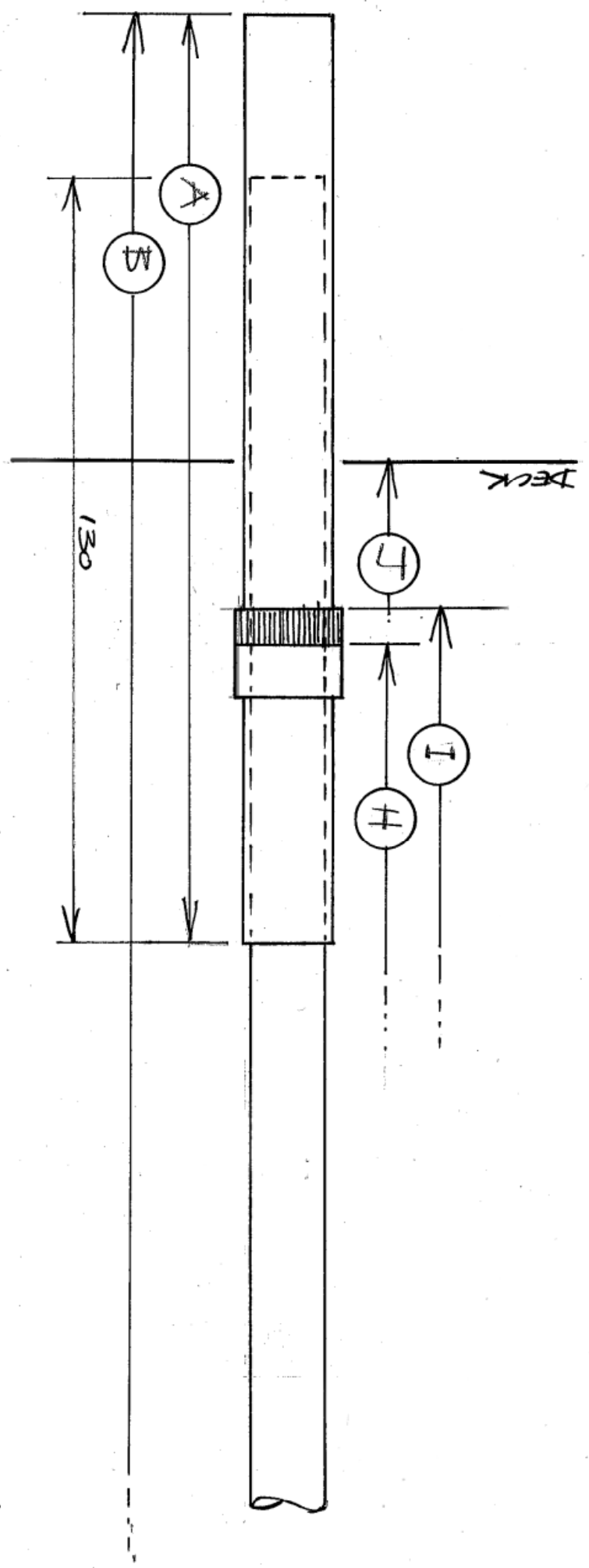
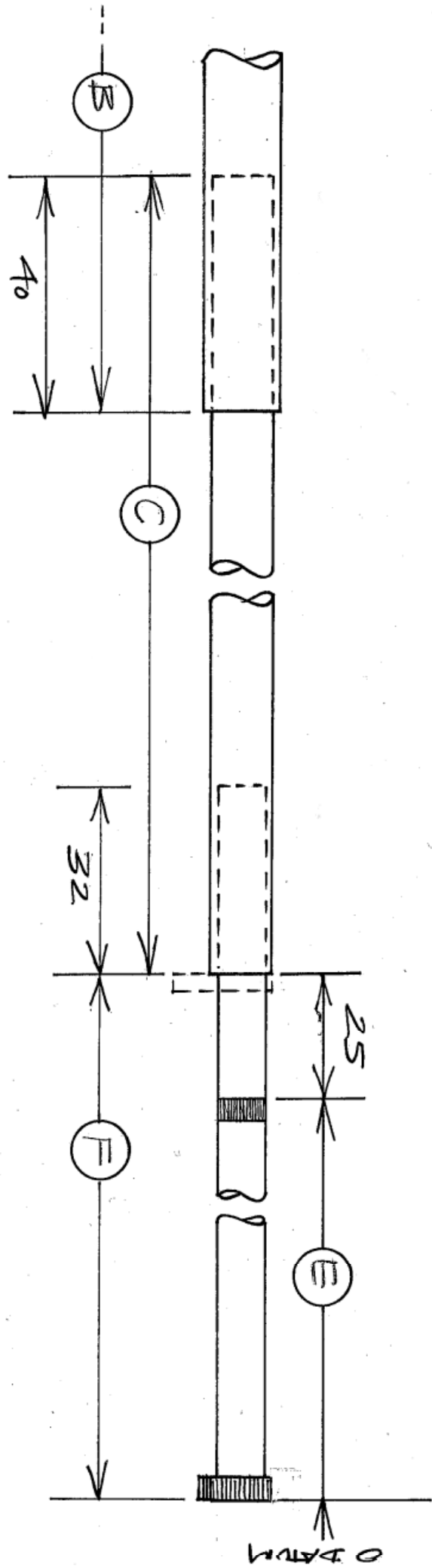
SAILSetc code

The following sheets are collated into this booklet

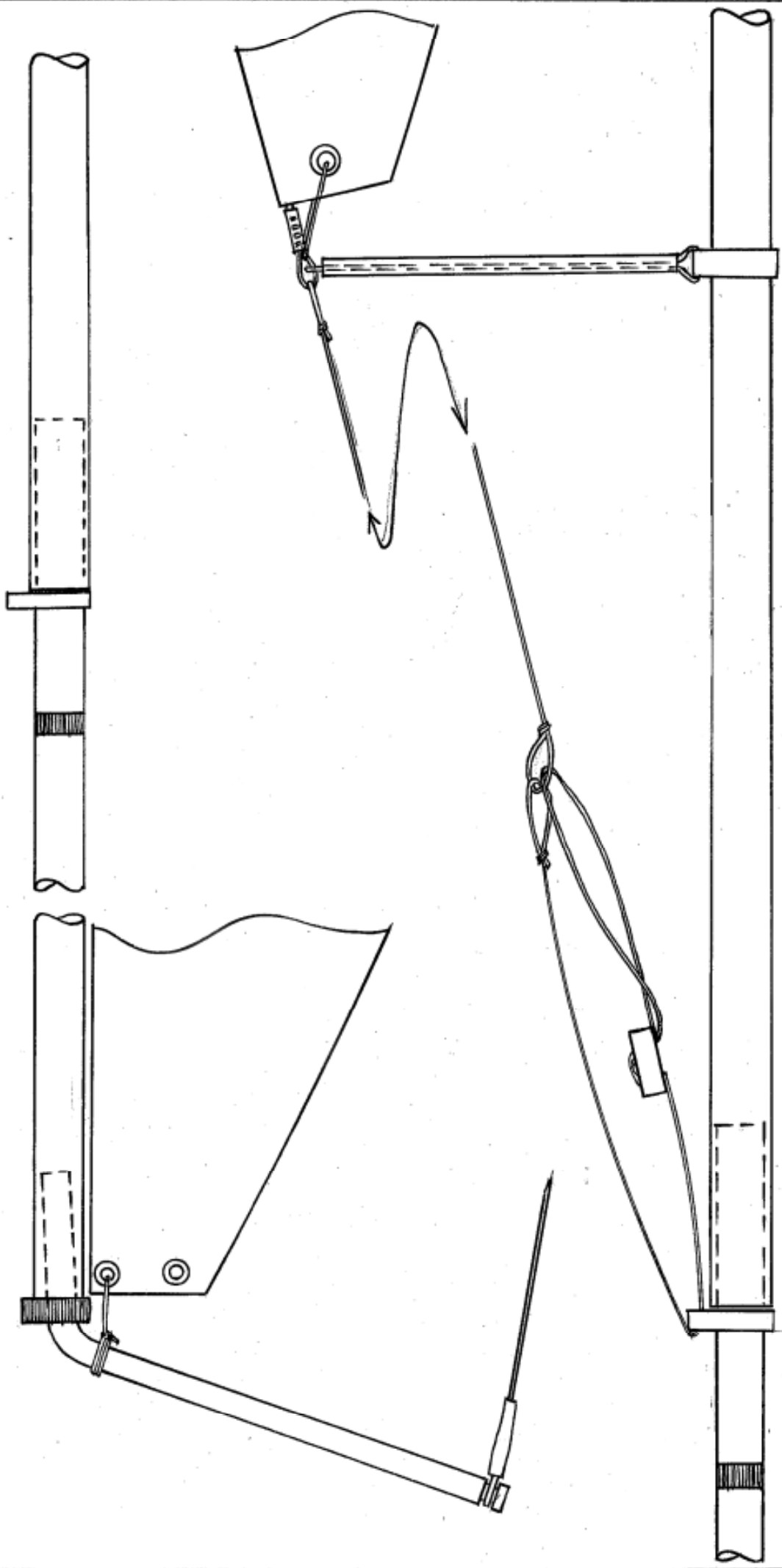
Marblehead swing rig dimensions	
Mast construction	RP-MLWSR-1
Mast head fittings, main halyard & backstay, headsail halyard	RP-MLWSR-2
Main boom & swing rig block – aft	RP-MLWSR-3
Main boom & swing rig block – fore	RP-MLWSR-4
Foreyard & headsail boom – aft	RP-MLWSR-5
Foreyard & headsail boom – fore	RP-MLWSR-6
Terminations for wire & line	RP-Gen-1

*Please note that the numbers placed in circles on the plan sheets relate to the numbered instructions in the **kit instructions, KI14LW**, which is available as a separate booklet (In preparation). The numbers placed in circles are not SAILSetc codes for those products.*

end

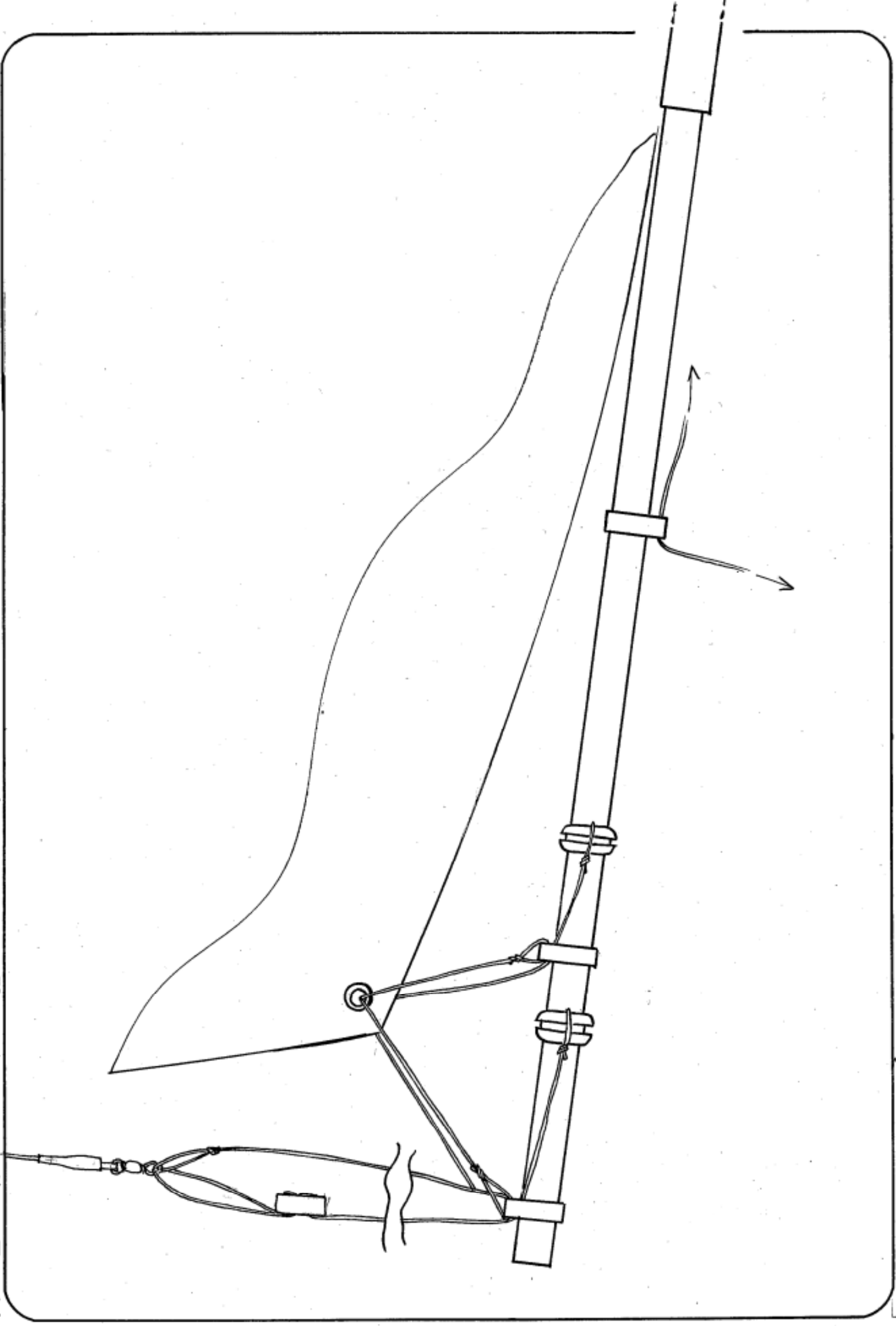


MAST HEAD FITTINGS, MAINSAIL HALYARD & BACKSTAY CRANE, HEADSAIL HALYARD RP-MLWSR-Z



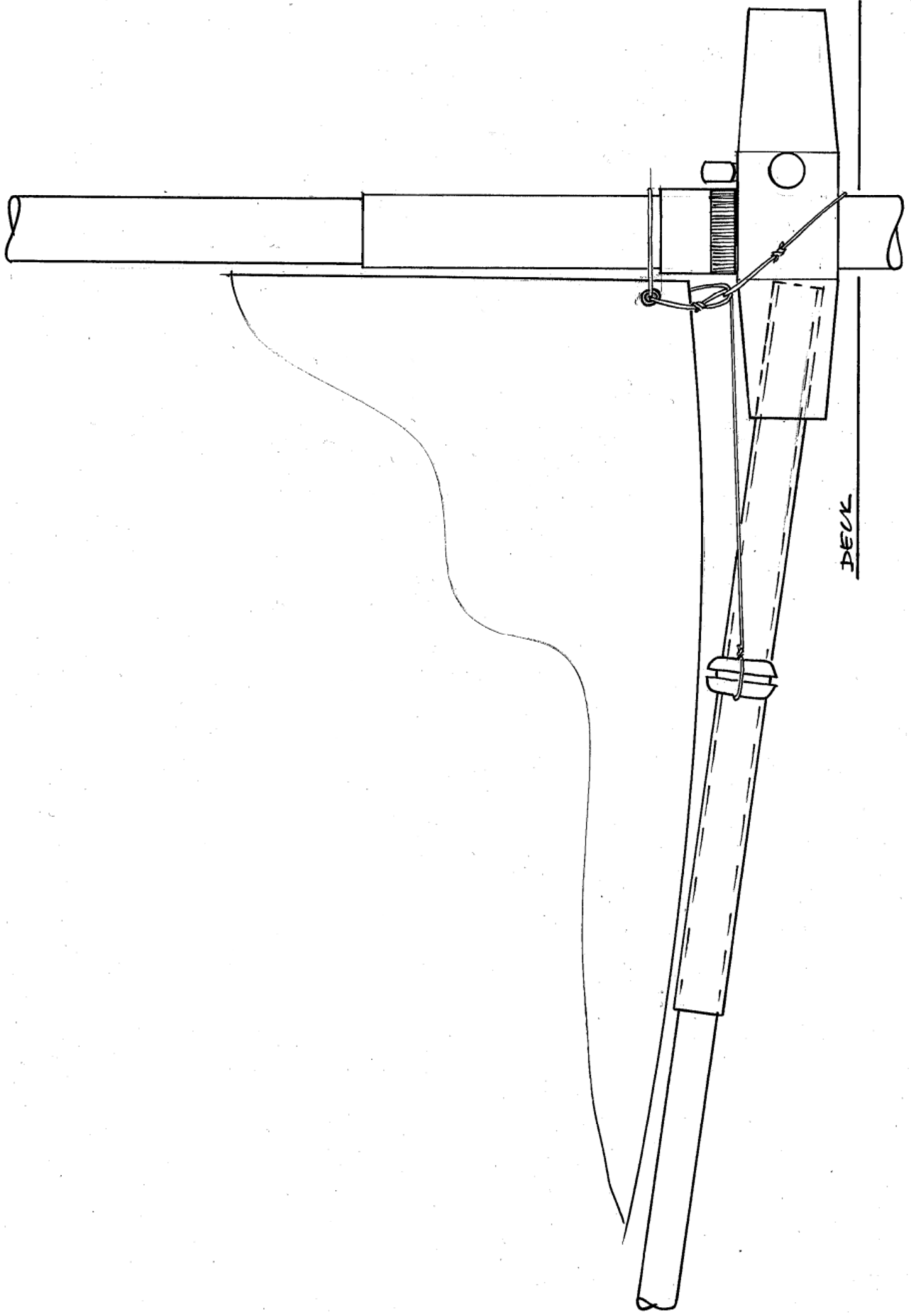
RP-MLW-SR-3

MAIN BOOM & SWING RIG BLOCK - AFT PART



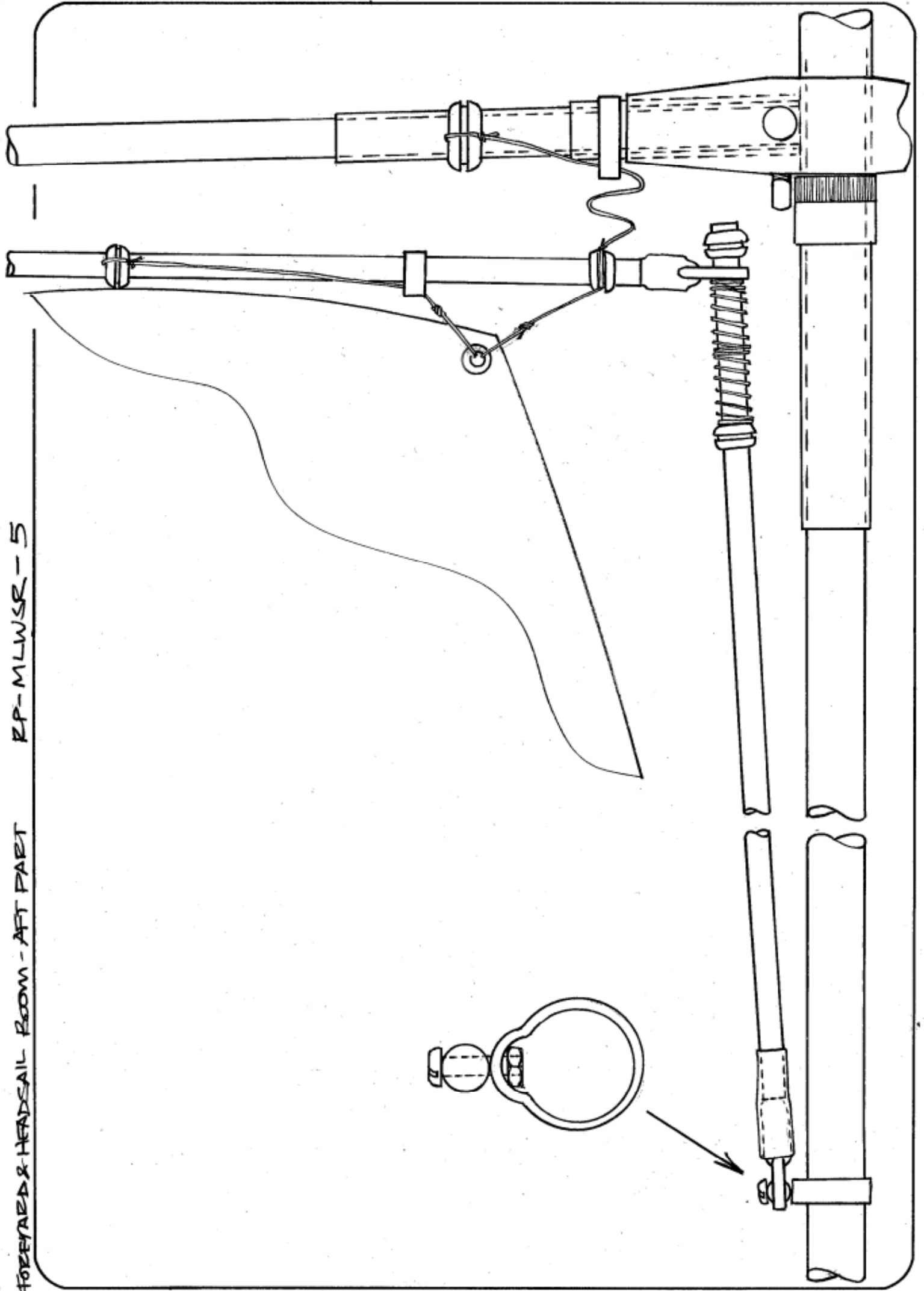
MAIN BOOM & SWING RIG BLOCK - FORE PART

RP-MLWSR-4



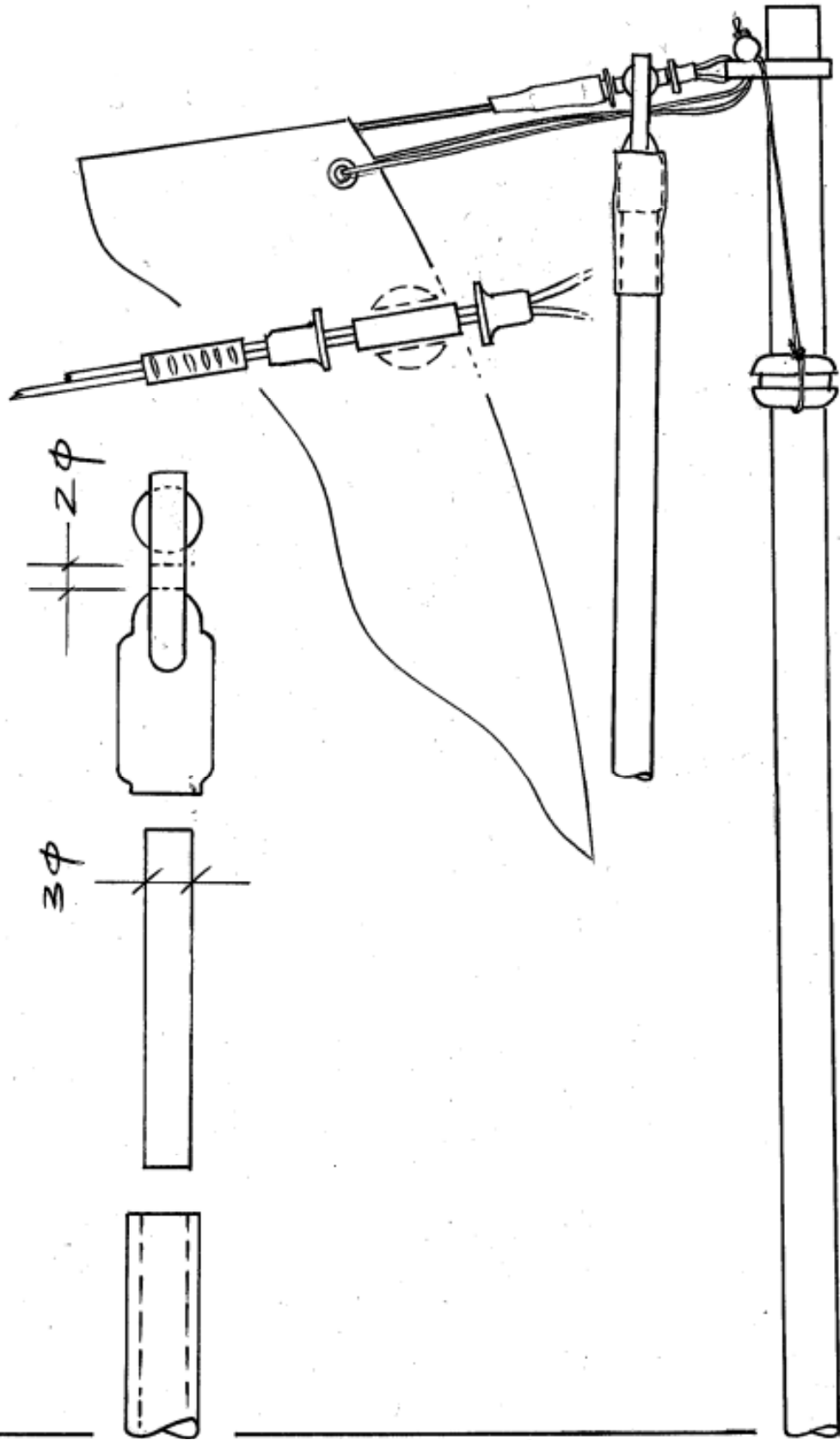
DECK

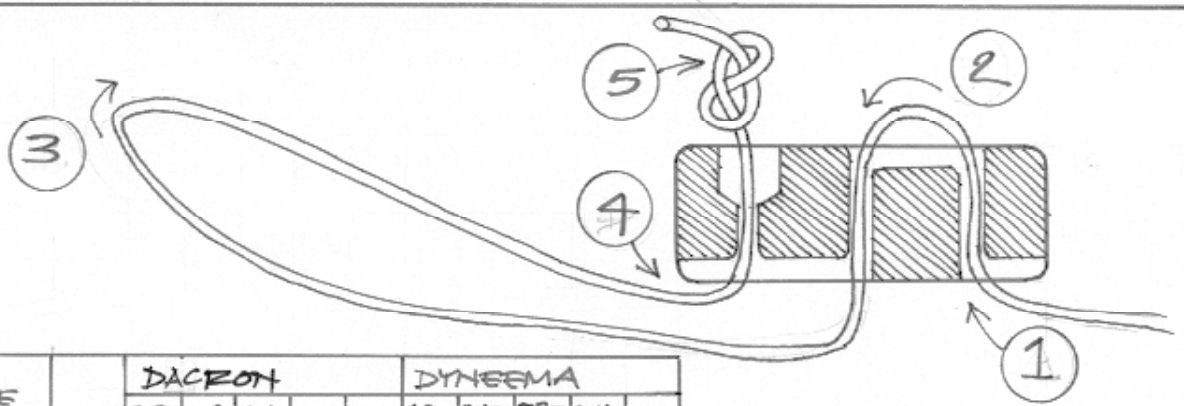
FORWARD & HEADSAIL BOOM - AFT PART RP-MLWSR-5



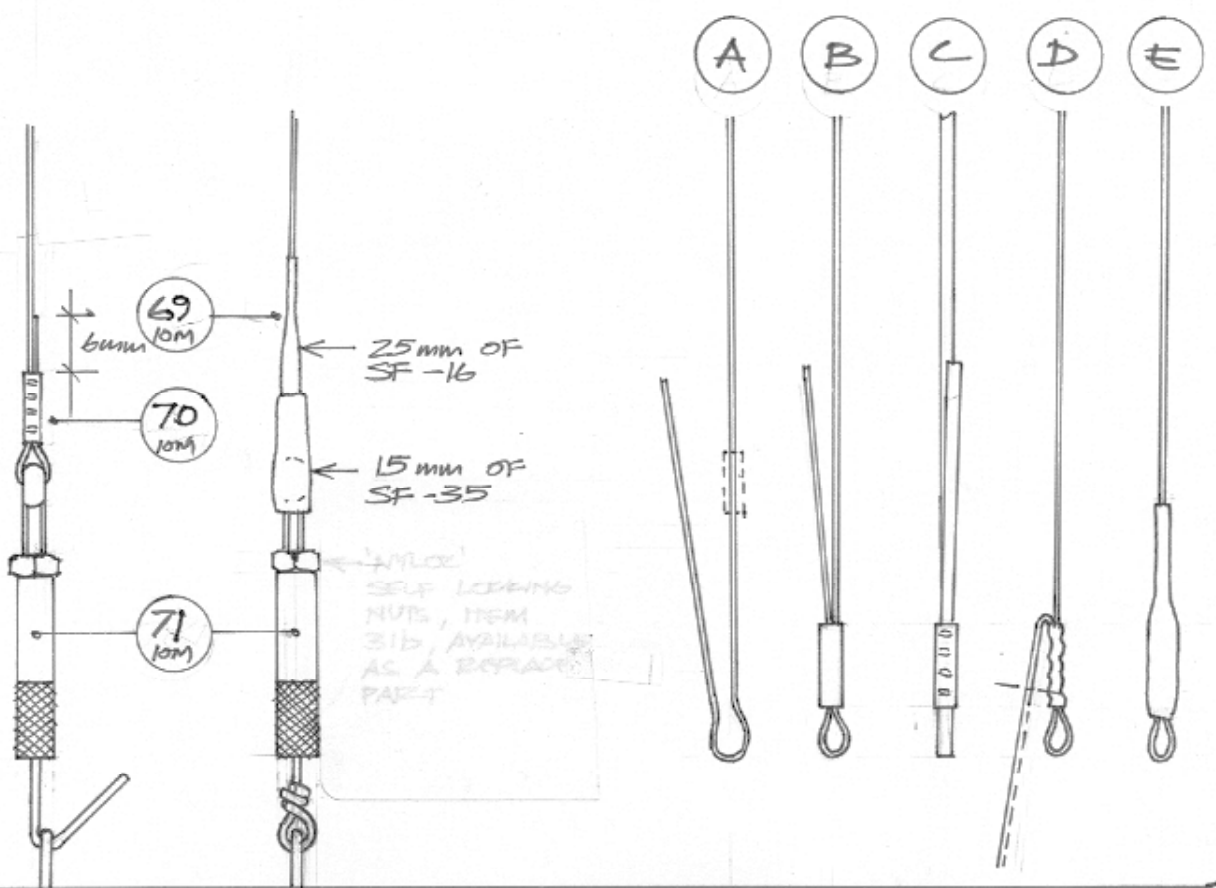
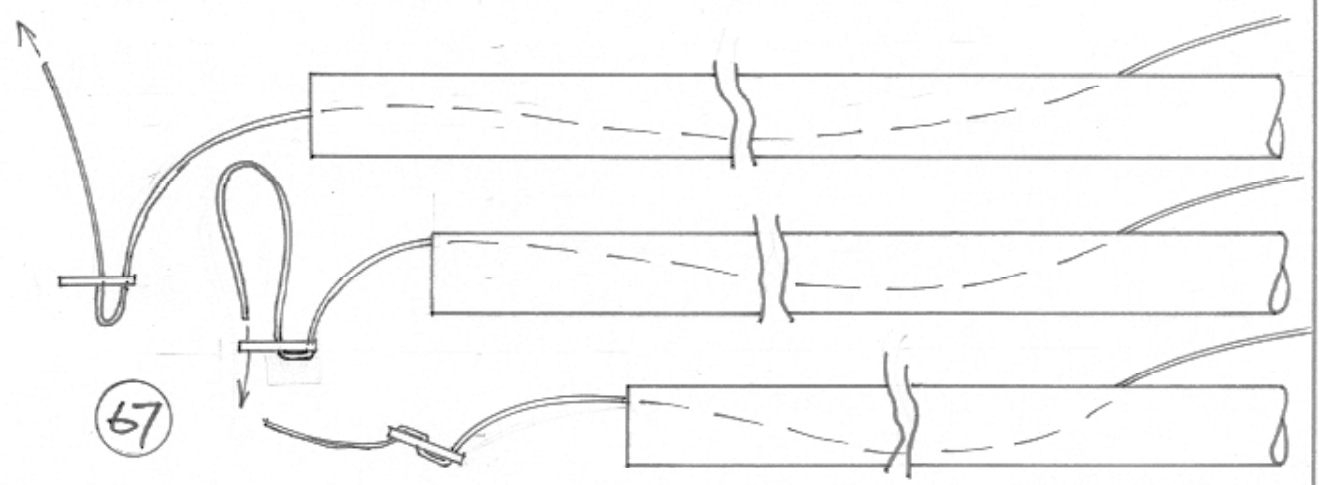
RP - MLWSR - G

FOREYARD & HEADSAIL BOOM - FOREPART





BOUNCE		DACRON			DYNEEMA			
		D25	D40	D60	D30	D50	D75	D110
SMALL	57c	✓			✓	✓	✓	
LARGE	57b		✓	✓		✓	✓	✓



**MARBLEHEAD
LIGHTWEIGHT
SWING RIG**

SAILSEIC, 141 High Street,
Kelvedon, Essex, CO5 9AA
© Graham Bartock, Kelvedon,
September 2014

		length of lower reinforcement section of mast	14	A	200
		length of lower section of mast	12	B	1000
		length of middle section of mast	10	C	815
		length of upper section of mast	8		492
		main yard	8		400
		main yard reinforcement	10		150
		fore yard	8		300
		fore yard reinforcement 1	10		100
		fore yard reinforcement 2	12		50
		strut	5		500
		headsail boom	5		240
		nominal mainsail luff length			2120
		top of mast to bottom of upper limit mark		D	5
		top of mast to bottom of middle limit mark		E	435
		top of mast to top of middle mast section		F	460
		top of mast to strut		G	
		top of mast to top of lower limit mark		H	2125
		top of mast to top of block/bottom of short tube		I	2135
		top of mast to deck		J	2155
		length of wire backstay		K	1900
	rig				
	A1				