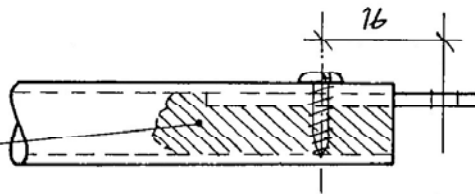


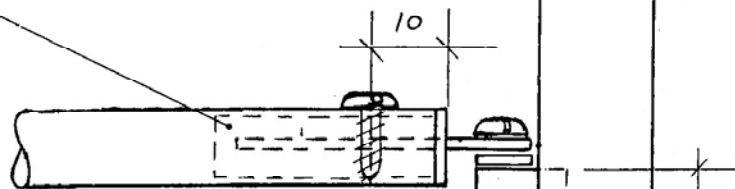
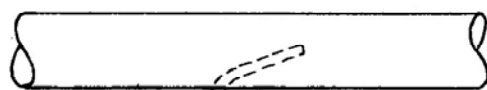
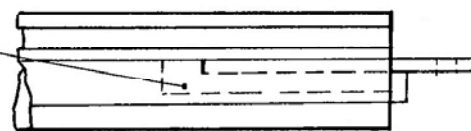
SAILSetc Catalogue Number	<b>2</b>		
Fitting Description	<b>gooseneck/kicking strap</b>		
Applications	<b>alloy GROOVY masts, Marblehead, Ten Rater, 6 Metre</b>		
Drawing Code	Product Information <b>PI 2</b>	<i>copyright SAILSetc 2015</i>	
Contents	Qty	Item	1 gooseneck/kicking strap unit 1 No 4 x 13 mm pan head screw 1 No 4 x 9 mm pan head screw 1 boom end fitting, 103F

Fix a tubular boom to the tang by bonding with epoxy filler and allowing to cure. Drill with a 2.7 mm diameter drill for a self tapping fit for the screw provided.

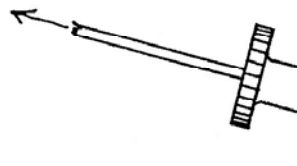


Boom end fitting, item 103g, is included in SAILSetc main boom kits.

Boom end fitting, item 103f, may be used to attach a boom with an 8 mm internal diameter.



Drill 2.7 mm diameter for a self tapping fit



60

